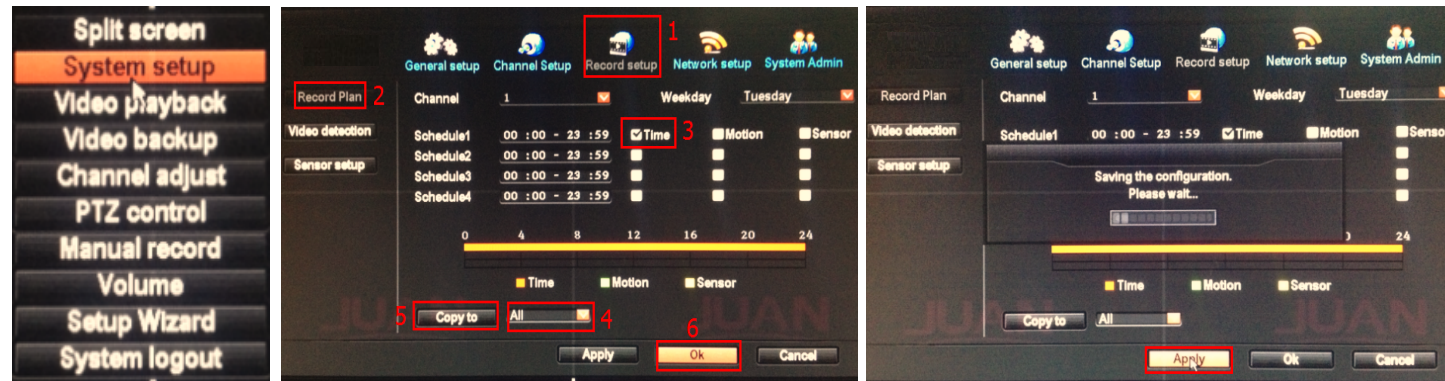


AHD DVR USER MANUAL

1 Record setup

Step: Right click mouse in main menu→ System setup→ Record setup→ choose time→ choose all→ click Copy to choose any channel → click yes to save settings

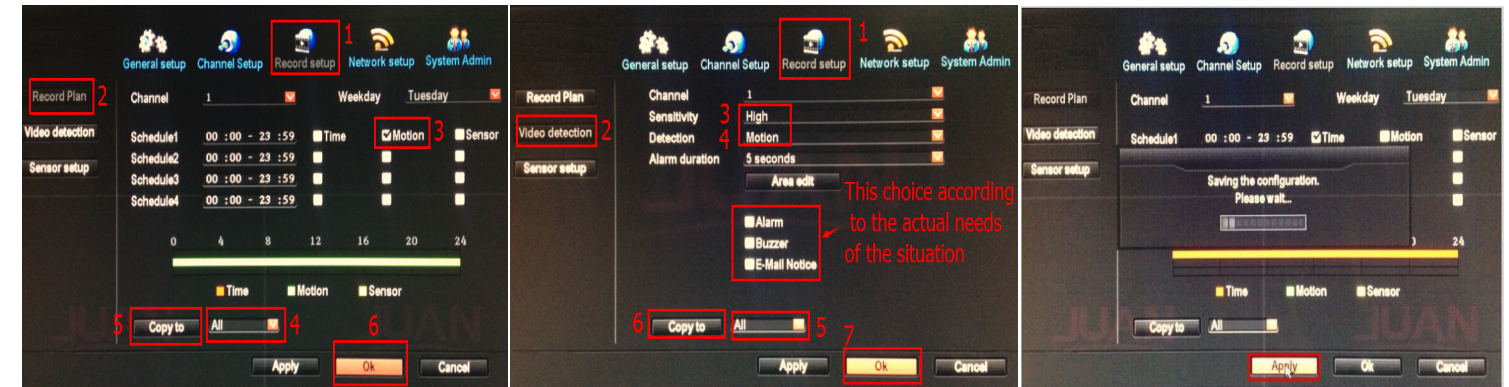
Tips: Before do recording setup, please make sure DVR is connected with HDD which is formatted.



4 Video detection setup

Steps1: Right click mouse in main menu→ System setup→ Record setup→ choose motion→ choose all→ click Copy to → click OK to save setting.

Step2: Choose Video detection→ set sensitivity as required→ choose motion→ set Alarm, Buzzer or Email as required→ click Copy to →click OK to save setting.



2 Video playback

Steps: Right click mouse in main menu→click video playback→ click Manual search→ click Search, recording will come out→ drag time bar to a certain time→ click playback to start

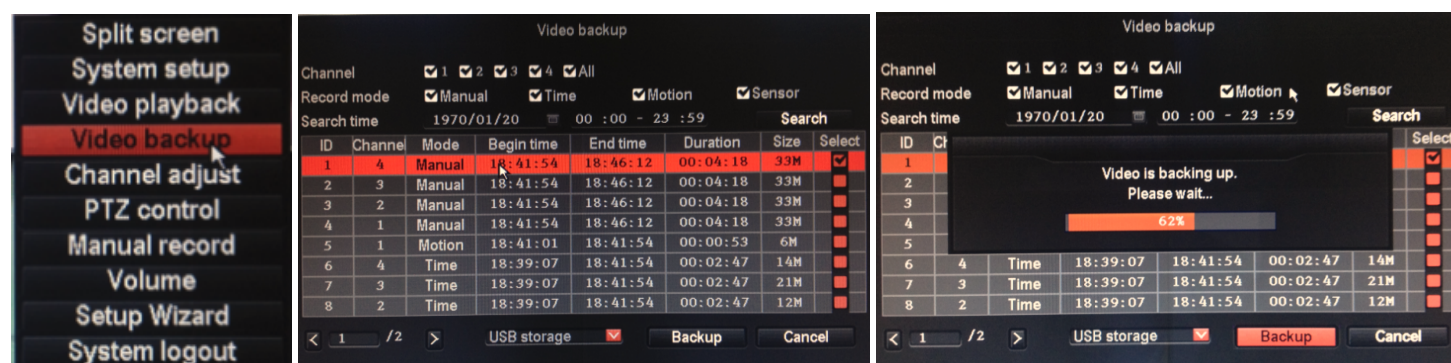
Tips: ⏪ previous frame playback ⏩ next frame playback ▶ play ⏸ pause ⏭ fast forward x2,x4,x8



3 Video backup

Steps: Right click mouse in main menu→ click Video backup→ choose channel→ choose recording mode→ setup the “searching time”, → click search, recording will come out→ choose the video which need to backup→ click Video backup

Tips:Support 32G flash disk backup in max.

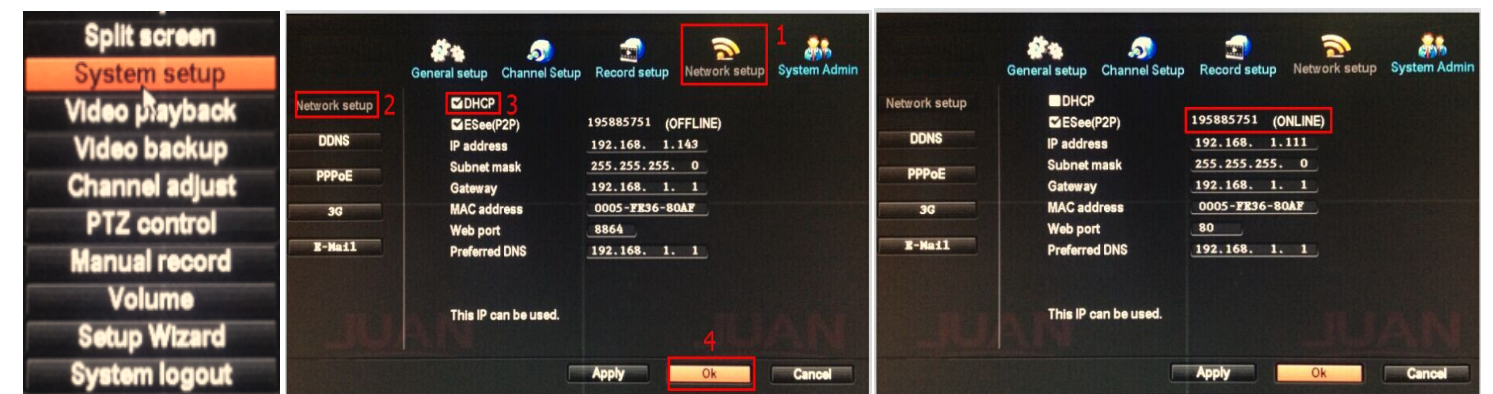


5 Generate Esee ID

Precondition to generate Esee ID is to make sure DVR is connected with network, and IP address is available.

Steps: Right click mouse in main menu→ System setup→ Network setup

If user is familiar with LAN, inpute IP address and DDNS address manually to get Esee ID, DVR will generate ID by network, once generate, it will appear behind Esee(P2P).



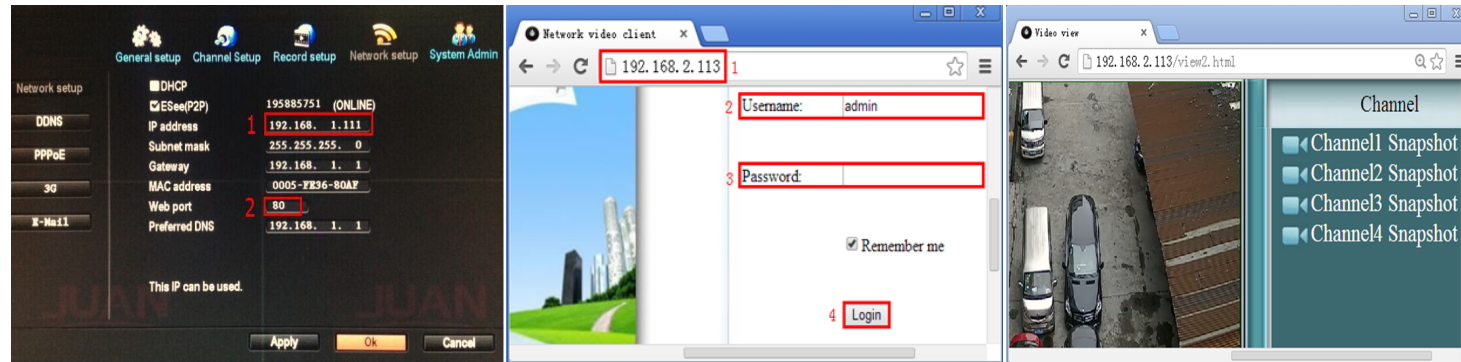
If user is not familiar with LAN, or DVR is in independent network, you can choose DHCP to get available IP address. After DVR get IP address, it will generate Esee ID automatically.

6 Access in LAN Access by computer in same router or use same switch with DVR

Step 1: Right click mouse in main menu→ System setup→ Network setup→ Check DVR IP address and save it.

Step 2: Access by computer in LAN, input DVR IP address and Port(no need to input when its 80), access website which build in DVR, log in by username and password.

Step 3: once access successfully, you can get video.
Tips: Please make sure DVR and computer in same network segment.



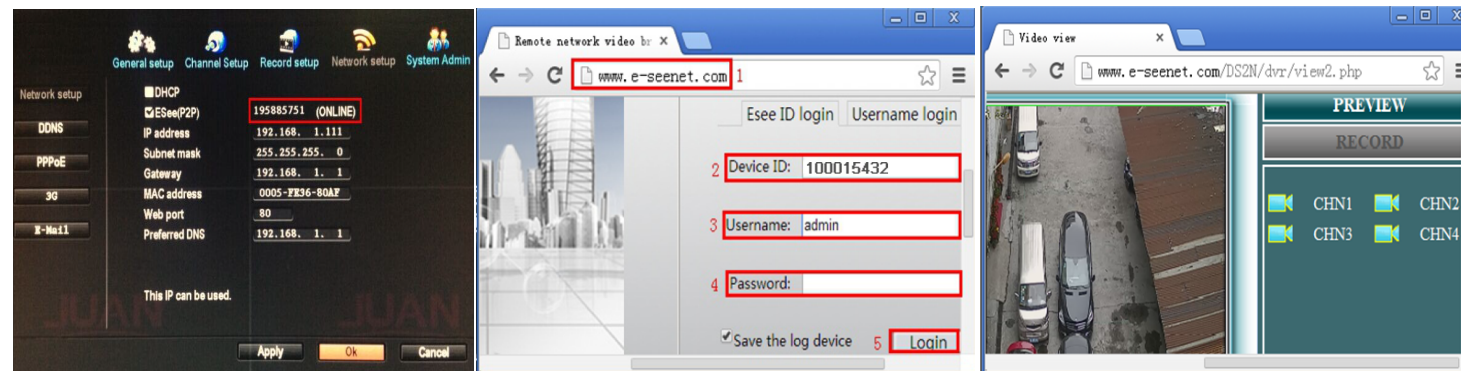
7 Access in WAN Access by computer which is in different router with DVR

Step 1: Right click mouse in main menu→ System setup→ Network setup→ Check Esee ID and save it

Step 2: Access by computer in WAN, goes to www.e-seenet.com/help/download.php in IE browser or any other browser, and input Esee ID, username and password, then log in and check video.

Step 3: once access successfully, you can get video.

Tips: Video quality and fluency depend on upload speed of DVR and download speed of computer, each channel need above 30kbyte/s.



8 Android application download and installation Two ways to download

No.1: Go to www.e-seenet.com/help/download.php in computer, click help→ software download→ find android mobile application, click download to save in computer→ copy to mobile to install.

NO.2: Scan QR code by mobile directly.



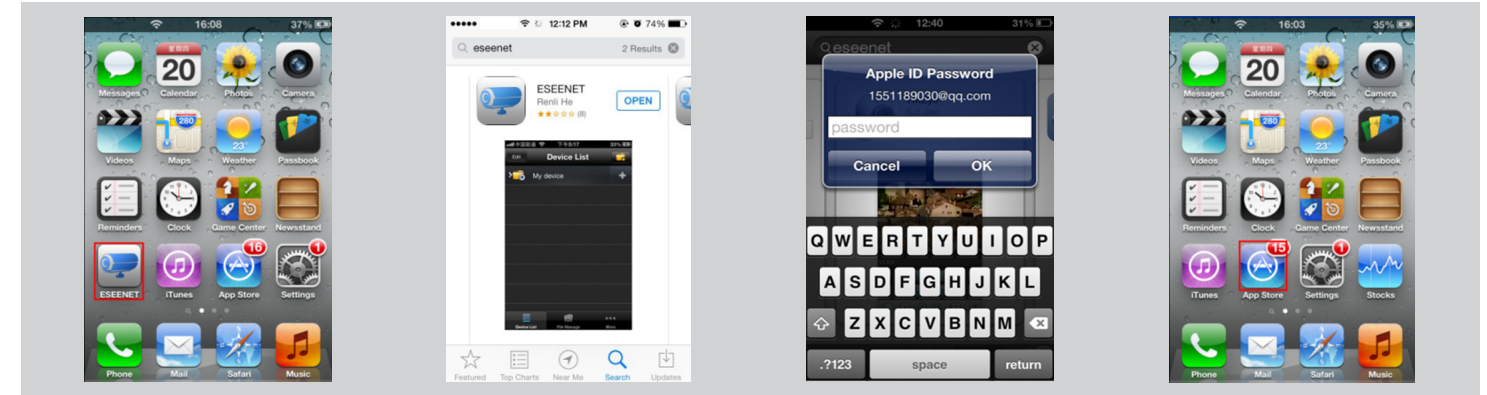
9 Iphone application download and installation

Step 1: Go to APP store

Step 2: Search EseeNet

Step 3: Input APP ID/user name/password

Step 4: installation finished



10 Mobile application(EseeNet) How to add device

Step 1:Log in EseeNet application.

Step 2:Enter into the device and edit page.

Step 3:Input DVR log in information

Step 4:once added successfully, it will show below page

Step 5:one channel preview as default, click "+" to add extra channel.

